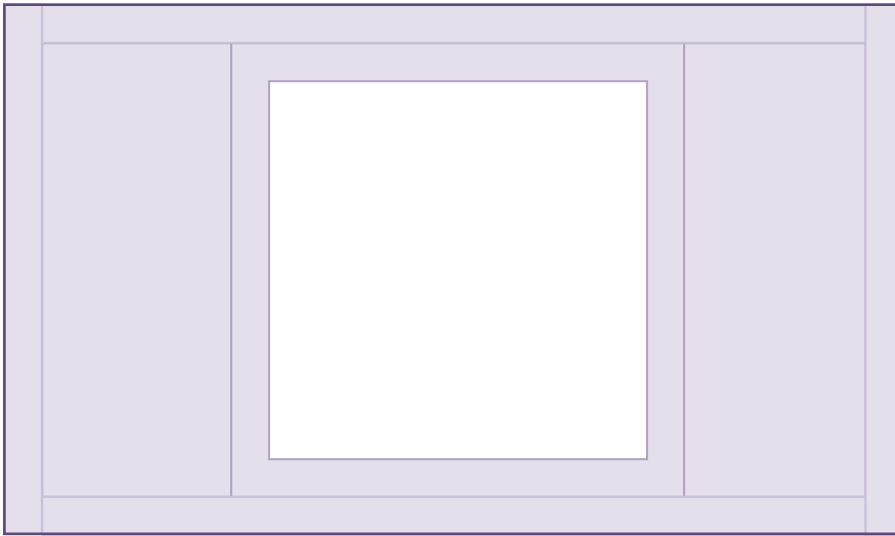
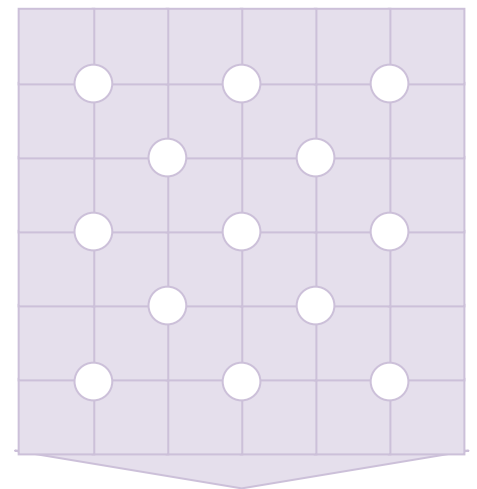


# ΤΡΙΕΣΚΑΙΔÉΑΕΣΤÉΝΟΡΟ



1: Superior frontal

2: Obturador



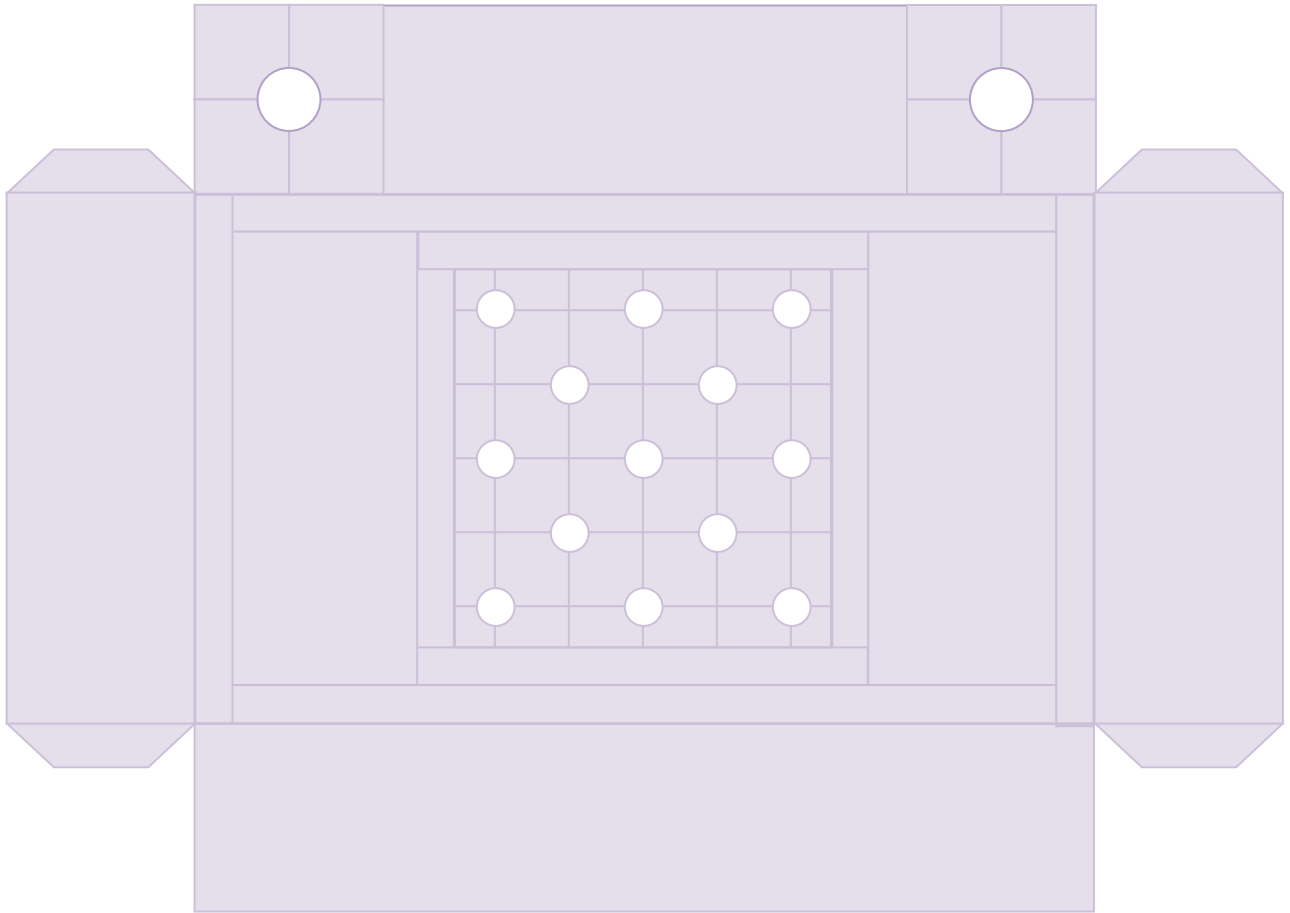
La pieza 3 (Contenedor del obturador) posee dos versiones entre las que se puede elegir obturar de forma horizontal o vertical.



3: Contenedor obturador (vertical).

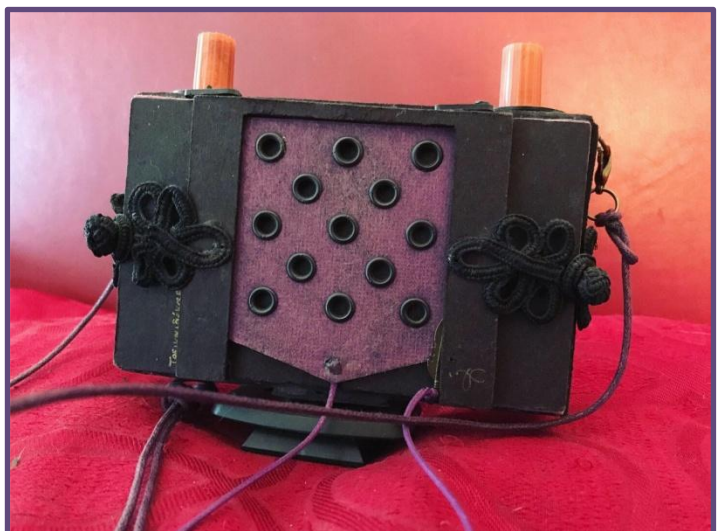
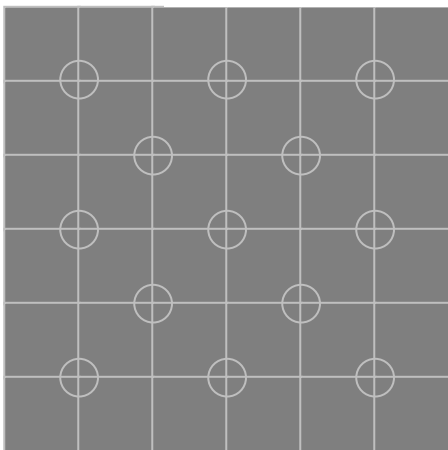


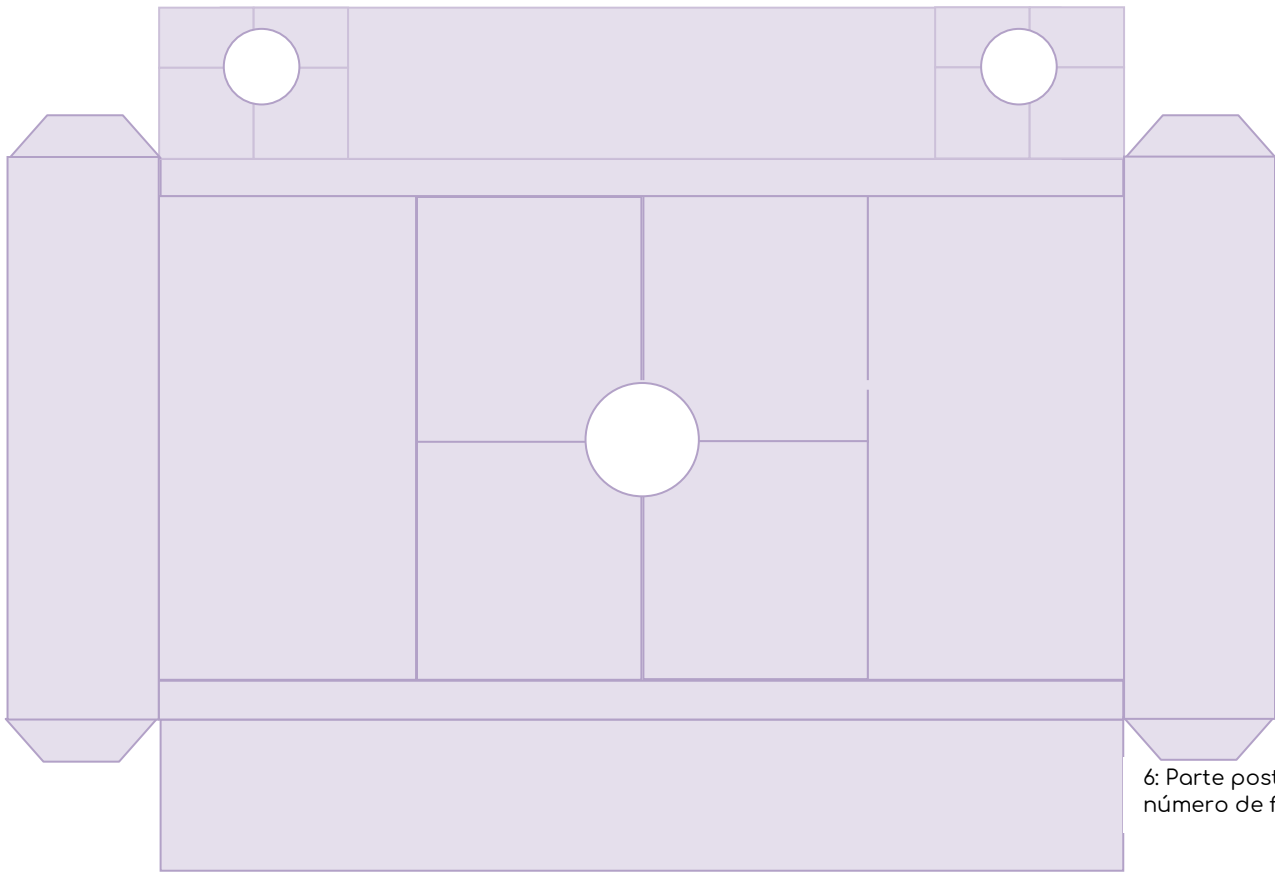
3: Contenedor obturador (horizontal).



4: Parte frontal

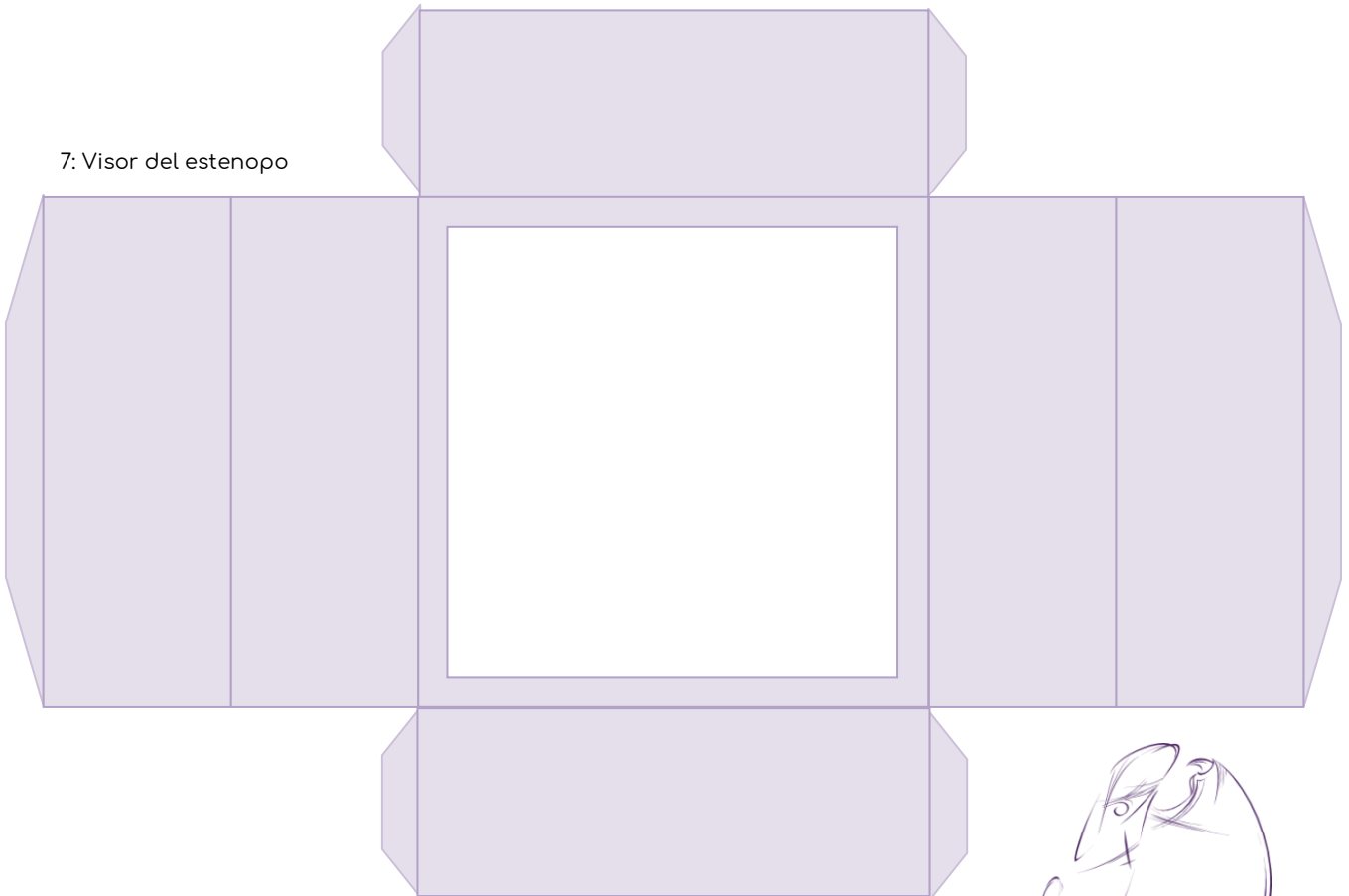
5: Estenopo (lámina metálica)





6: Parte posterior con visor número de fotograma

7: Visor del estenopo



‘ΑΡΠΥΙΑ